

What's Inside

Page 2
Payroll Enhancements
CONTINUED

Page 3
Sage ERP MAS Intelligence
For Version 4.5

Page 4
SQL Server Version Of Sage
ERP MAS 200 Available For
Upgrade

Headline News

Sage is conducting informative Sage ERP MAS 90 and 200 Version 4.5 release webcasts throughout the fall. The webcasts allow you to see the software in action and hear about the many features and enhancements directly from the experts at Sage. For the schedule of webcasts and to register [Click here.](#)

Payroll Enhancements

Sage ERP MAS 90 And 200 Version 4.5 Provides New Deduction Methods And More

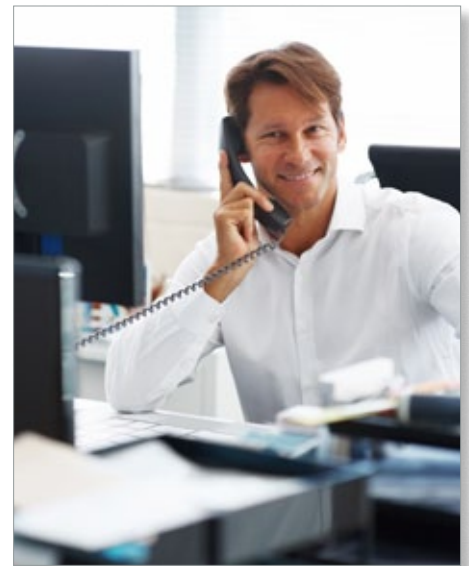
Payroll can be time consuming and complicated with the ever-increasing intricacies of taxation and employment legislation. Sage ERP MAS 90 Version 4.5 contains workflow improvements and a significant number of features designed to help you handle the complexities of deductions and accruals more effectively.

New Version 4.5 Payroll functionality offers more flexibility, streamlines the data entry process, and provides more consistent and accurate calculations for deductions. Five additional deduction calculation methods are added, along with the ability to automatically perform deduction recalculations and set deductions based on earnings type. You also will find it easier to import from commonly used time management software and will be able to establish a minimum number of hours worked for benefit accruals. Let's learn more.

Deduction Calculation Methods

Five new deduction calculation methods have been added in Version 4.5, many of which support the calculations needed for union deductions and dues.

- **Based on Paid Hours**—This method will provide a calculation for the total hours worked multiplied by the pay rate multiplier you choose.
- **Based on Pay Rate**—This method will calculate the selected pay rate multiplied by the number that is entered. When this method is selected, an additional drop-down box will be displayed, allowing you to choose the appropriate rate.

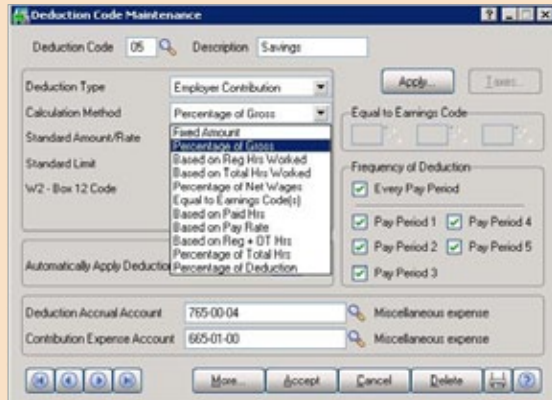


- **Based on Regular plus Overtime Hours**—This method automatically will provide a calculation based on the sum of regular and overtime hours multiplied by the pay rate.
- **Percentage of Total Hours**—This method will calculate based on the total hours worked, regardless of regular or overtime, multiplied by the percentage you establish.
- **Percentage of Deduction Method**—This method is used during tax calculation such as Percentage of Net Wages and is only available for Employer Contributions. Note: When the Percentage of Deduction method is selected, an additional field is displayed to allow the selected code to be entered.

Payroll Enhancements

(continued from cover)

ZOOM IN



In Sage ERP MAS 90 and 200 Version 4.5, deduction code maintenance includes five new options for deduction calculations.

ZOOM IN



New fields in Benefit Schedule Maintenance allow you to set the minimum hours per paycheck required for the benefit to be applied.

Deduction Recalculation In Payroll Data Entry

In Version 4.5 **Payroll Data Entry** the workflow is improved to automate deduction calculations based on changes in the earnings line. You will be able to recalculate the deduction automatically, while still in data entry, instead of deleting the information and reentering. This will save you valuable data entry time.

Deduction Calculations Based On Earnings Type

Another new feature related to deductions will enable you to use payroll deduction codes according to a specified earnings type in order to calculate based on *Percent of Gross* or *Total Hours Worked*. This allows an employer to calculate benefits such as a Pension Plan and 401K contributions based on specific earnings such as regular, sick, and vacation earnings, and not on others, such as overtime. A new Earnings button now is available in Version 4.5 **Deduction Code Maintenance** to allow the selection of specific types of Earnings to be used for deduction calculations.


Easier Imports Into Payroll Data Entry

Visual Integrator is enhanced in Version 4.5 to support the import of data into Payroll Data Entry from some of the more commonly used labor management and time tracking systems. This enhancement will be particularly useful when performing multiple data imports for regular, vacation, and sick time. File layouts and sample imports are included for the five most popular data import formats. Sample imports will be included for:

- Format 2—Fixed Field Format
- Format 3—ADP Format
- Format 8—TimeBank or Kronos Connect Format with department number and employee number imported
- Format 8—TimeBank or Kronos Connect Format with only employee number imported
- Format M—Fixed Field Format for Timetrack v8.0

Enhanced Benefit Accrual

With the release of Sage ERP MAS 90 Version 4.5, you will be able to calculate benefit accruals based on hours worked, which can be used to support salaried employees, union employees, and part-time employees. The new functionality will use a code assigned to each employee to compare the Minimum Hours Required for Benefit Accrual with the hours worked. If the conditions you set are not achieved the accrual will not occur.

The Payroll enhancements are only one component of the Version 4.5 release of Sage ERP MAS 90 and 200; this release includes new capabilities across the system. Give us a call with your questions. 

Sage ERP MAS Intelligence For Version 4.5

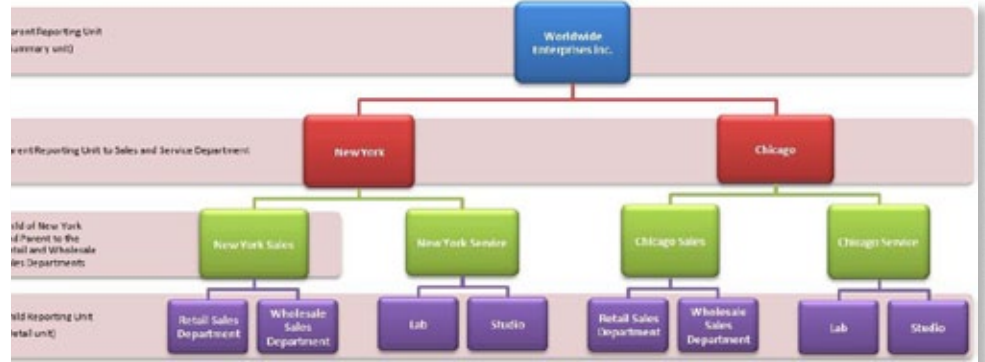
Sage ERP MAS Intelligence for Version 4.5 adds the ability to attach Reporting Trees to Report Designer layouts. The new trees will expand the options that companies can use for different reporting structures. A 90-day trial period is included for Report Designer so customers can experience the benefits of expanded importing and exporting capabilities, and creating scheduler commands. Also included in Version 4.5 is more flexibility on how reports or any Excel workbooks are distributed, supporting distribution via email, publishing to a public server, and FTP publishing.

Reporting Trees

The new Reporting Tree structure enables you to generate reports that follow your internal company structure automatically, with the flexibility to accommodate anything from a simple to a very sophisticated hierarchy. Using Reporting Units, you can set up reports that represent your organization's hierarchies, and then easily generate them at a Detailed or Summary level. These Reporting Units can be departments by GL account segments, or higher level groups in the company, established by building as many parent and child relationships as you need.

Sage ERP MAS Intelligence has the ability to set up hundreds of tree units for those companies who have complex corporate hierarchies, and also meet the needs of more simple organizations who require just a few levels of tree units.

Modifying a reporting structure to accommodate consolidations or acquisitions is easy. As business needs change, you can modify Reporting Trees without changing financial data. The new Manage Reporting Trees screen allows you to build, modify, add, rename, and duplicate existing trees.



This example of the new highly visual Reporting Tree capabilities show Worldwide Enterprises as the main company, with locations in New York and Chicago, Sales and Services in each location, and their departments.

Enhanced Report Distribution

One of the benefits of Reporting Trees is the ability to deliver reports to all levels of management, thereby allowing each department or division access to the information they need for better decision support. With the Version 4.5 release, Sage ERP MAS Intelligence has increased flexibility to distribute Intelligence Reports and Excel workbooks. You can save the reports to a file, publish them to an FTP site, or send them via email in a variety of standard formats. You can choose the reports you want to distribute and how and to whom you will send them. You can speed up business processes by automating report delivery and distribution according to the schedule you require.

Email Format Flexibility

You can establish unique settings for each email format, choosing from PDF, HTML, and XLSX, and create custom criteria for report distribution. You also can send a report to various destinations, establish a regular distribution to managers and executives, and use an existing Microsoft Outlook® profile and address book. Flexible options include the ability to add pertinent information to the report when it is distributed by the chosen electronic method, such as the useful ability

to reference a specific cell in the body of the email. Using the File Publish tab, you can distribute reports to locations within your organization's network in PDF, HTML, and XLSX formats. The FTP tab allows you to easily distribute reports to FTP locations in these same formats.

Unattended Report Distribution

Sage ERP MAS Intelligence For Version 4.5 provides the ability to establish convenient, fully unattended report distribution. Once the required Distribution Instructions are setup and linked to worksheets within a report, you can flag the linked distribution instructions to be sent automatically whenever the report is run by a Scheduler Command within Report Manager.

Looking Ahead

Working with Microsoft, Sage is developing a utility that will decrypt proprietary FRx files. The Conversion Utility Assistant will allow consultants or users familiar with FRx to recreate similar reports in Intelligence more quickly, and reduce the effort in migrating FRx reports over to Intelligence. Please call us with your questions. ✨

IN THE SPOTLIGHT:

SQL Server Version Of Sage ERP MAS 200 Available For Upgrade

With the release of Sage ERP MAS 200 Version 4.5, customers have the option to migrate their software to a Microsoft SQL Server database, with all the security and performance characteristics of this platform.

Benefits Of SQL Server

Here we discuss four important benefits of SQL Server: performance, availability, security, and low cost of maintenance.

- **Performance:** SQL Server offers exceptional scalability as you add users and transactions. You also can add indexes to improve performance as needed.
- **Availability:** SQL Server includes innovative high-availability features such as database mirroring and replication, to minimize downtime and help to ensure that critical systems remain available.
- **Security:** Administrators can easily manage permissions. You can set consistent login policies across all accounts in the domain. SQL Server includes encryption capabilities within the database itself.
- **Low Cost Maintenance:** A single management console enables data administrators to monitor, manage, and tune databases and associated services from anywhere in your organization.

Same Code Base

All modules in the new Business Framework have software code that can be used for both the SQL and Providex databases, so customers can be assured that the SQL version will move forward into new

versions at the same pace as the Providex version. With Version 4.5, data conversion and migration is available from both Sage ERP MAS 200 SQL Version 3.71 as well as current versions of Sage ERP MAS 90 and 200 on the Providex platform.

Licenses Available From Sage

Sage SQL Runtime Edition licenses and Microsoft SQL Server 2008 R2 Standard Edition licenses are available from Sage in two licensing models: per user or per processor. Licenses are limited for use with Sage ERP and integrated third-party or development partner solutions.

Available Modules

Modules available for SQL Server do not include modules that have not yet been updated to the Business Framework, so if you are considering SQL Server, we will need to carefully evaluate the modules in use in your organization. The modules and Sage solutions that are available for Sage ERP MAS 200 SQL 4.5 are:

- **Core accounting:** GL, AR, AP, and BR
- **Distribution:** IM, SO, PO, RMA, BC, BM, and CCP
- **Business intelligence and reporting:** Business Insights Dashboard, Business Insights Explorer, Sage ERP MAS Intelligence, and Crystal Reports Designer
- **Productivity and customization:** Custom Office, Paperless Office, Visual Integrator, KnowledgeSync
- **Integrated Sage solutions:** Abra Payroll

and HR, SageCRM, Sage FAS Asset Accounting

- **Web services:** CompuPay, eBusiness Web Services, Federal and State eFiling and Reporting, Sales Tax powered by AvaTax

Give us a call with your questions, or to discuss the benefits of the SQL version for your organization. ✨

Contact Information

Capitol Computer Systems, Inc.
406 Second Street
New Cumberland, PA 17070
(717) 774-7406
(717) 774-7367 fax
dianal@capitolcom.com
www.capitolcom.com

